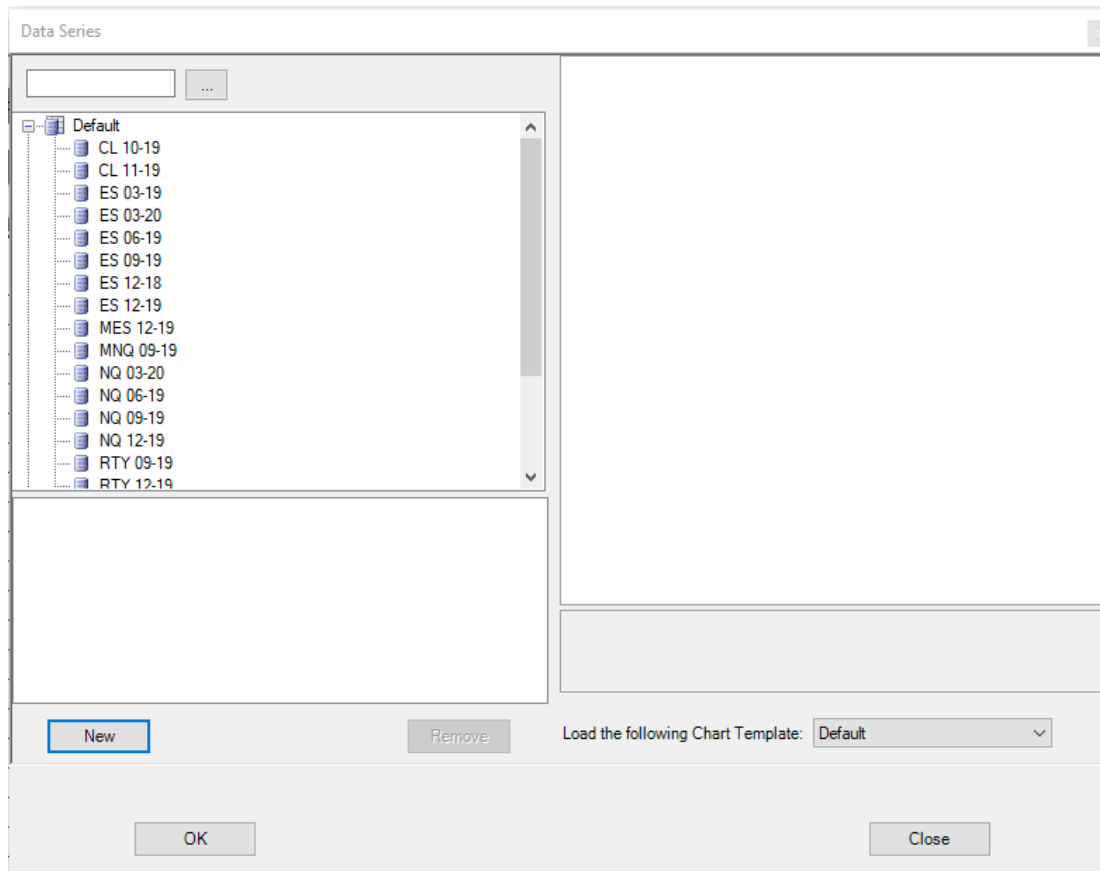


How to create a 30 Second Chart

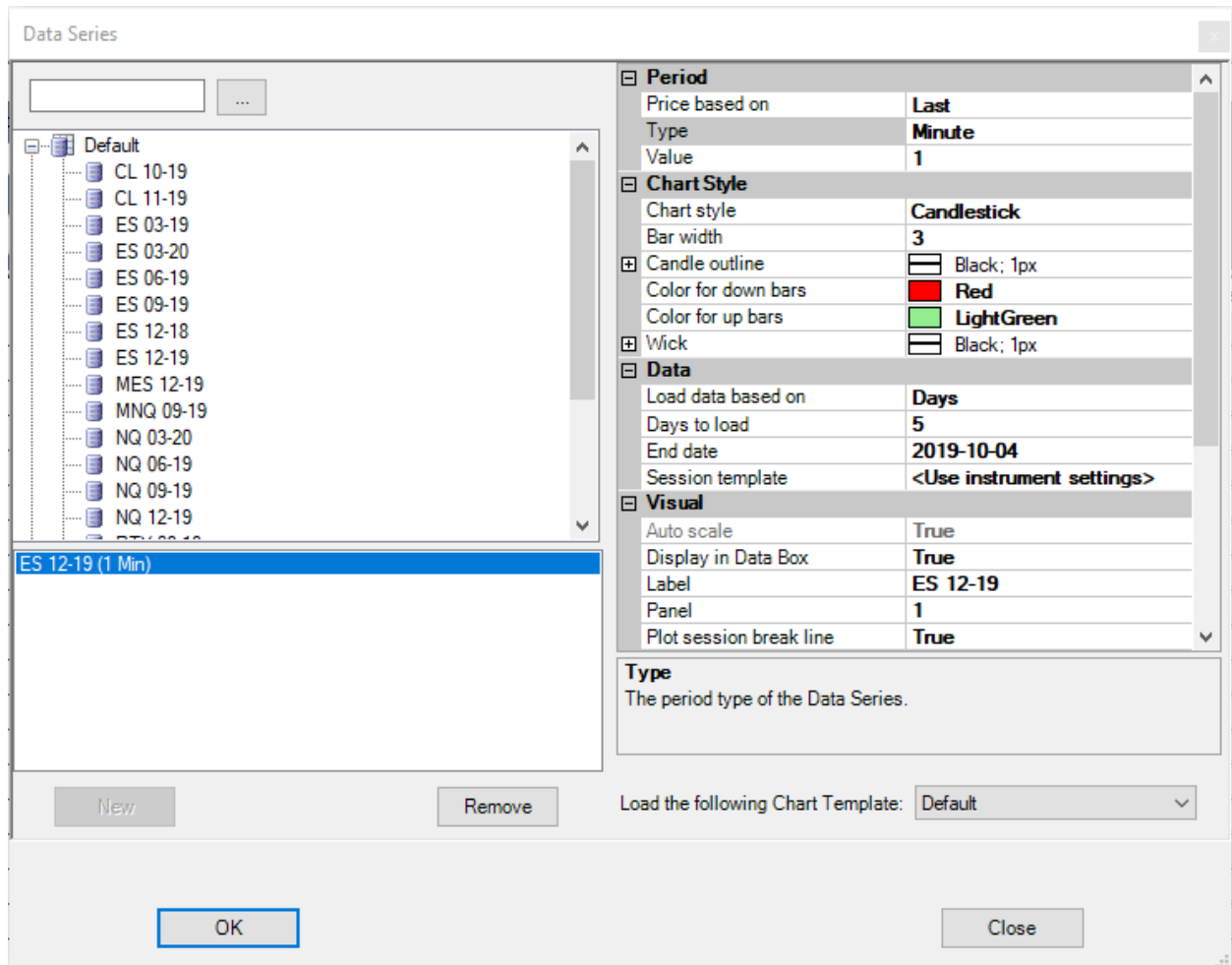
When we create a NEW Chart we usually take all the defaults, which default to a minute chart.

Click File → New → Chart



The Data series form appears

Double click on the instrument you wish to use

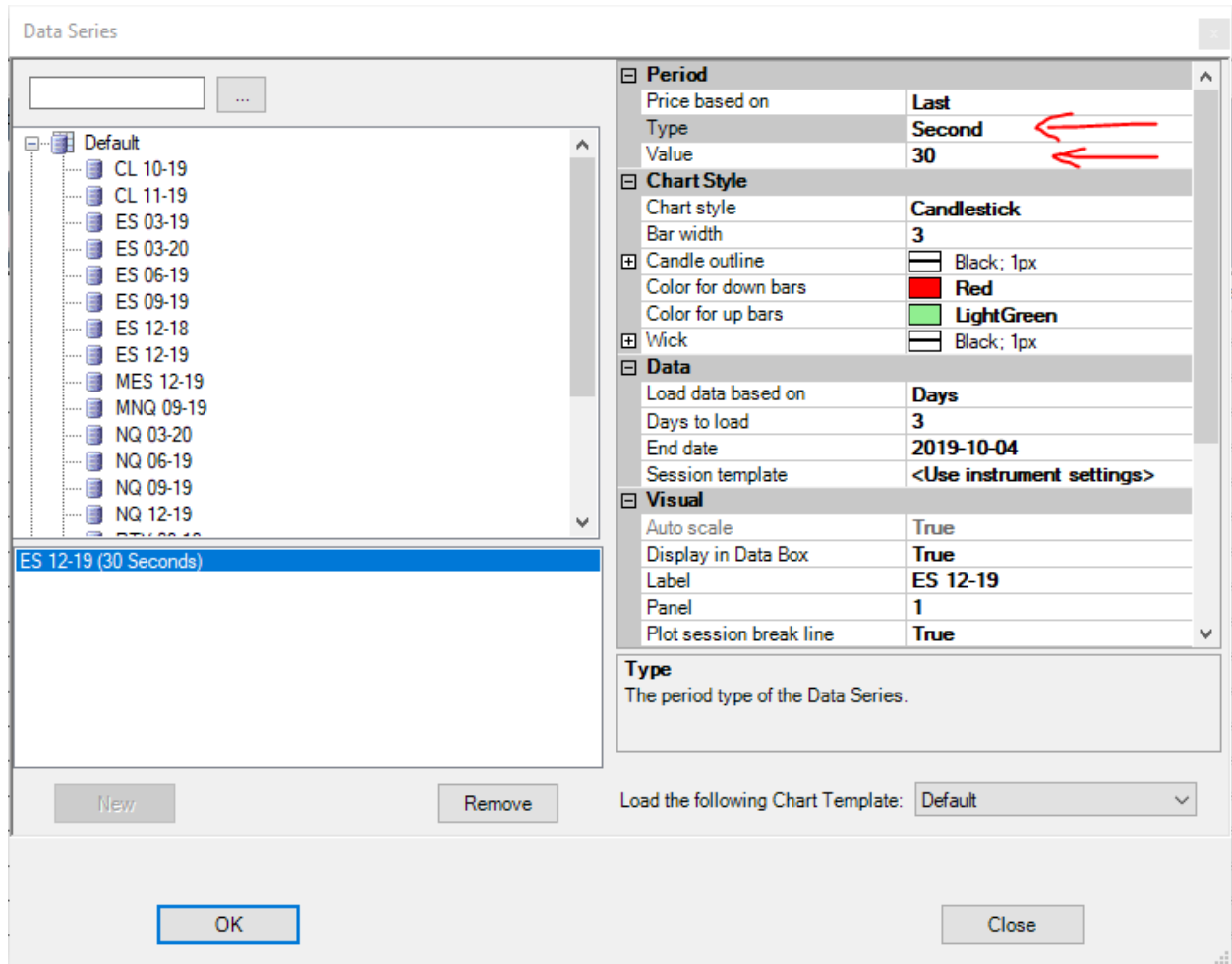


If we selected the instrument properly we will have a line highlighted in blue in the lower left box.

Note that the Type is defaulting to Minute and the value is 1.

The Type parameter has many bar types in the dropdown.

Click the type parameter and change Minute parameter to Second and update the value to 30.



Click OK and add the auto trader.

You are all set.

